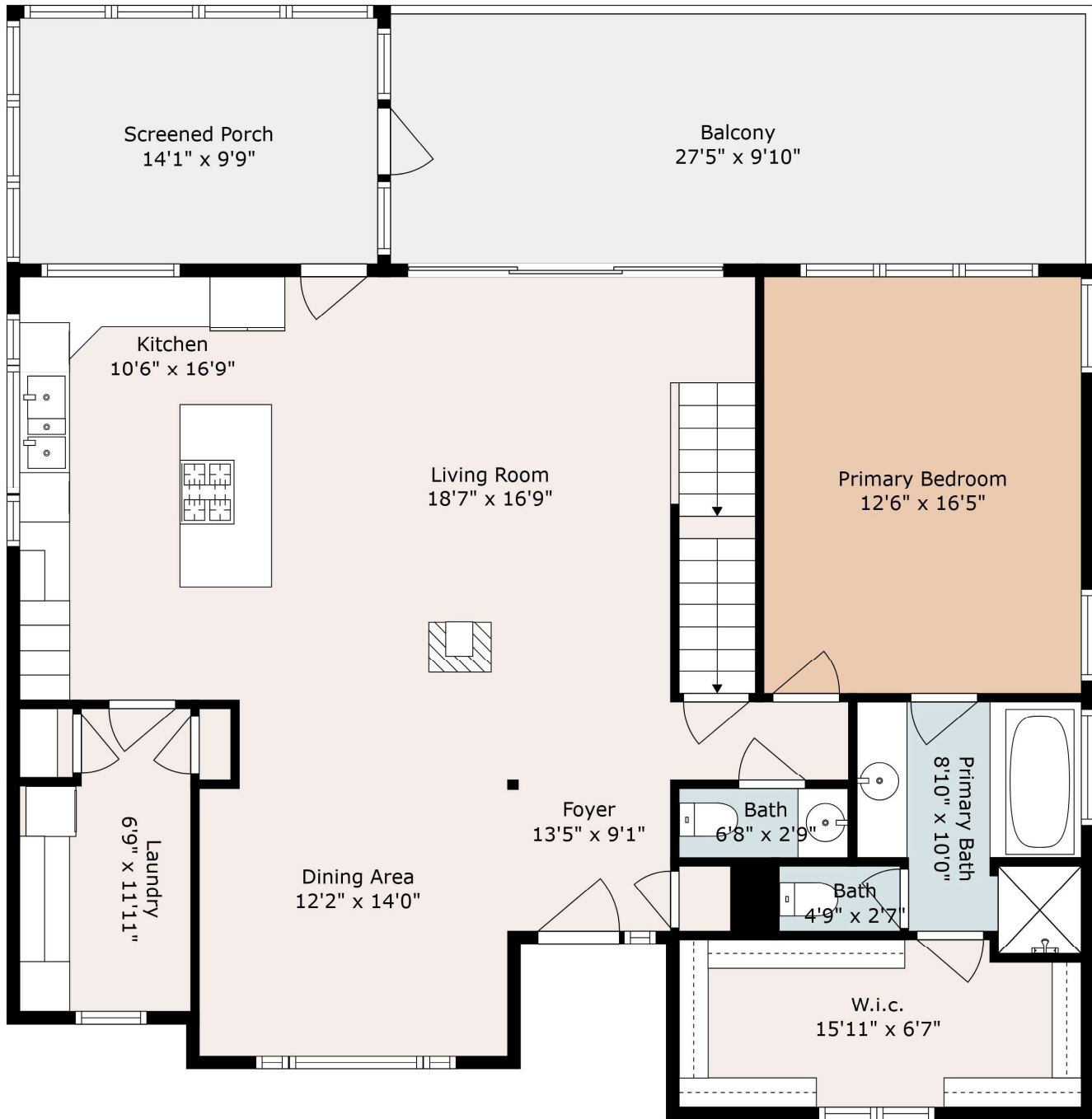


243 Hard Times Ridge, Brevard NC 28712



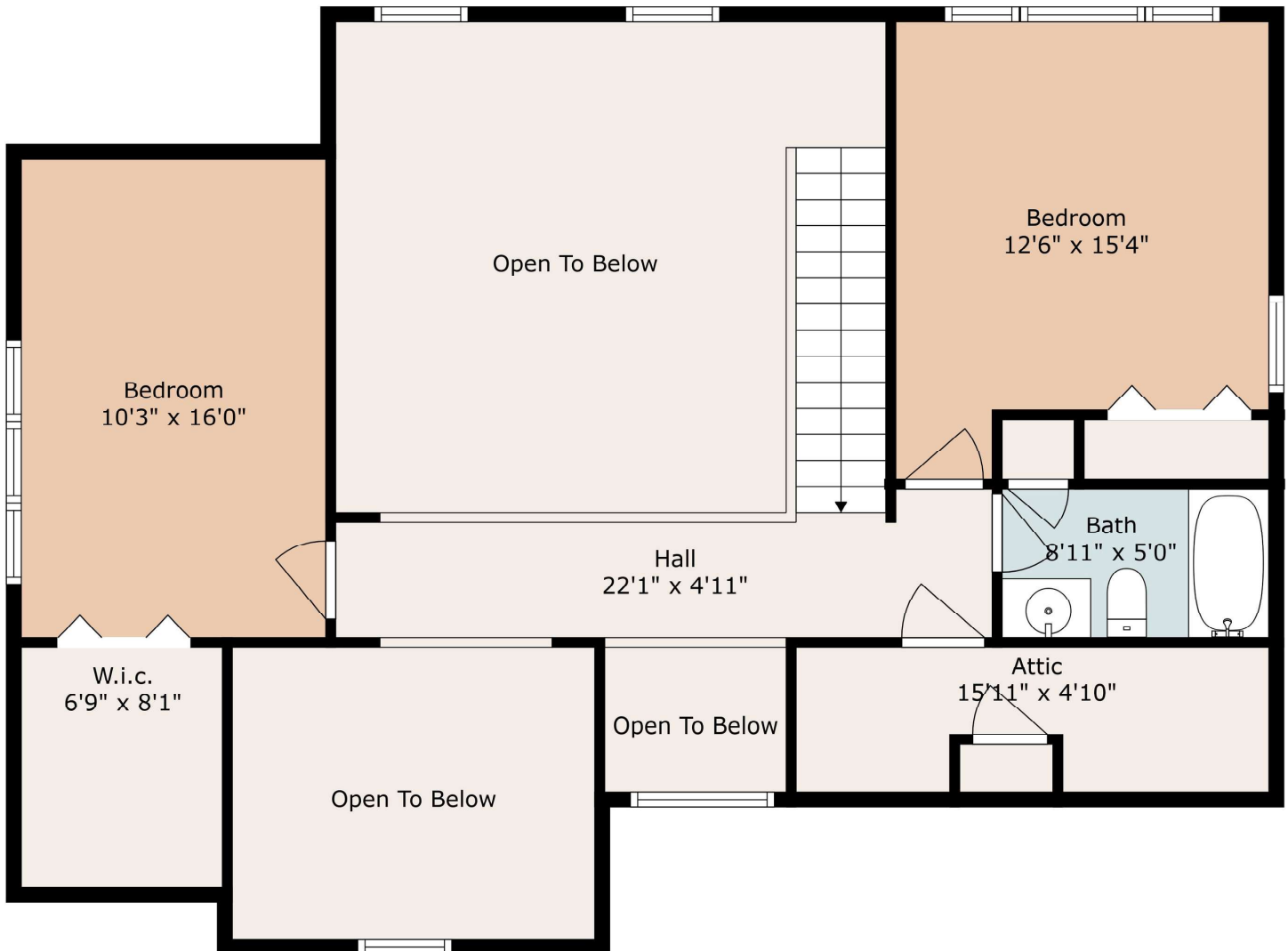
Main House

Estimated Total Finished
Square Footage: 1953 SQ FT

- *First Floor: 1367.82 sqft*
- *Second Floor: 585.51 sqft*

Measurements are produced in accordance with NCREC Residential Square Footage Guidelines using laser measuring tools and LIDAR devices; deemed reliable but not guaranteed. Not intended for construction. Building and septic permits are not checked for the purposes of this report. Listing agent should review the completed work to verify that the HLA calculation includes only areas that qualify as HLA.

243 Hard Times Ridge, Brevard NC 28712



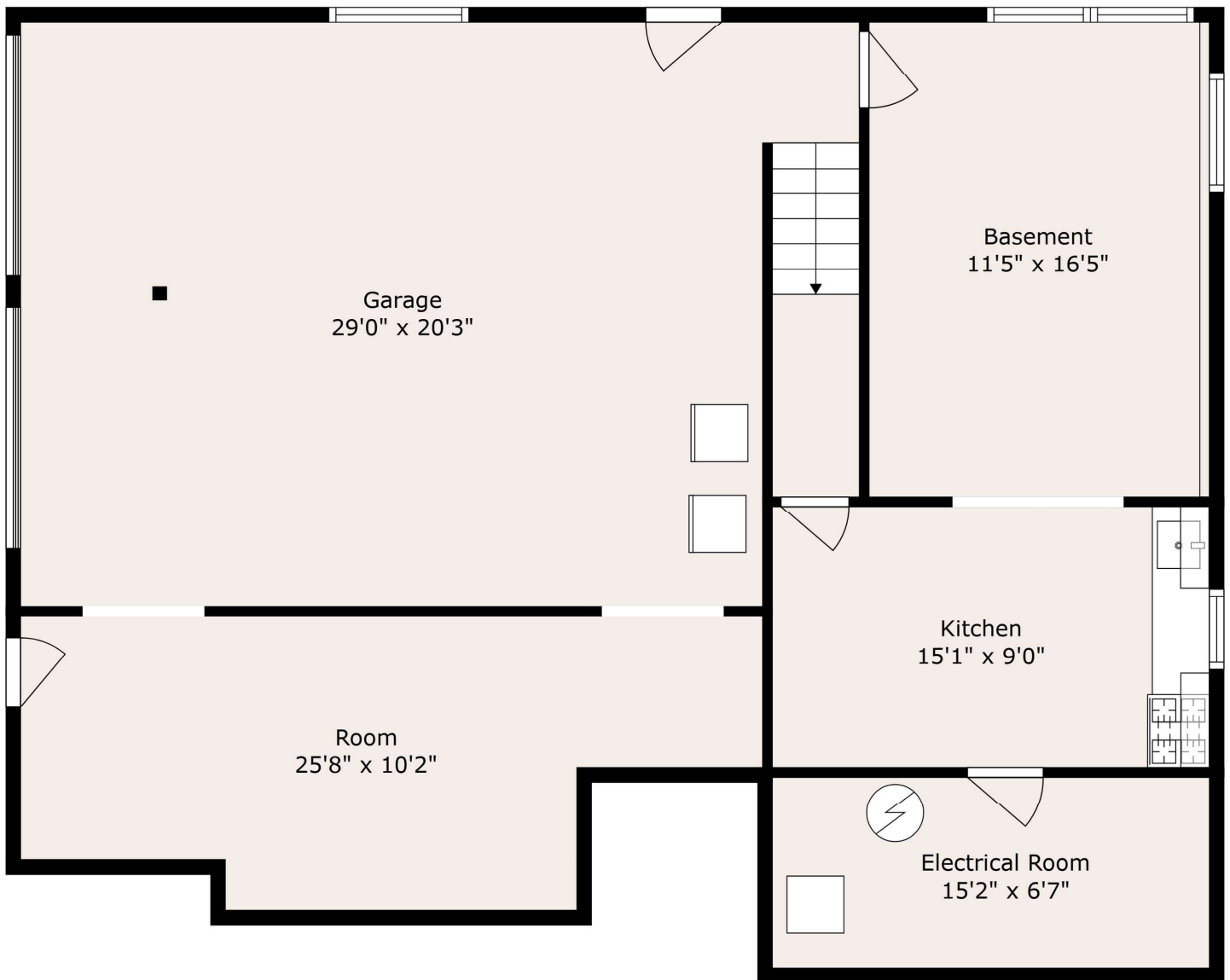
Main House
Second Floor

Estimated Total Finished
Square Footage: 1953 SQ FT

- *First Floor: 1367.82 sqft*
- *Second Floor: 585.51 sqft*

Measurements are produced in accordance with NCREC Residential Square Footage Guidelines using laser measuring tools and LiDAR devices; deemed reliable but not guaranteed. Not intended for construction. Building and septic permits are not checked for the purposes of this report. Listing agent should review the completed work to verify that the HLA calculation includes only areas that qualify as HLA.

243 Hard Times Ridge, Brevard NC 28712



Main House
Basement

Estimated Total Finished
Square Footage: 1953 SQ FT

- *First Floor: 1367.82 sqft*
- *Second Floor: 585.51 sqft*

Measurements are produced in accordance with NCREC Residential Square Footage Guidelines using laser measuring tools and LiDAR devices; deemed reliable but not guaranteed. Not intended for construction. Building and septic permits are not checked for the purposes of this report. Listing agent should review the completed work to verify that the HLA calculation includes only areas that qualify as HLA.

405 Hard Times Ridge, Brevard NC 28712



Original
Main Level

Estimated Total Finished
Square Footage: 2877 SQ FT

- *Main Level: 2170.02 sqft*
- *Finished Basement: 707 sqft*

Measurements are produced in accordance with NCREC Residential Square Footage Guidelines using laser measuring tools and LiDAR devices; deemed reliable but not guaranteed. Not intended for construction. Building and septic permits are not checked for the purposes of this report. Listing agent should review the completed work to verify that the HLA calculation includes only areas that qualify as HLA.

405 Hard Times Ridge, Brevard NC 28712



Original
Finished Basement & Garage

Estimated Total Finished
Square Footage: 2877 SQ FT

- *First Floor: 2170.02 sqft*
- *Finished Basement: 707 sqft*

Measurements are produced in accordance with NCREC Residential Square Footage Guidelines using laser measuring tools and LiDAR devices; deemed reliable but not guaranteed. Not intended for construction. Building and septic permits are not checked for the purposes of this report. Listing agent should review the completed work to verify that the HLA calculation includes only areas that qualify as HLA.

404 Hard Times Ridge, Brevard NC 28712



Garage Apartment

Estimated Total Finished
Square Footage: 573 SQ FT

- *Garage: 573.24 sqft*
- *Garage (Upper Level) Apartment: 573.24 sqft*

Measurements are produced in accordance with NCREC Residential Square Footage Guidelines using laser measuring tools and LiDAR devices; deemed reliable but not guaranteed. Not intended for construction. Building and septic permits are not checked for the purposes of this report. Listing agent should review the completed work to verify that the HLA calculation includes only areas that qualify as HLA.

438 Hard Times Ridge, Brevard NC 28712



Cabin

**Estimated Total Finished
Square Footage: 391 SQ FT**

- *First Floor: 510.72 sqft*
- *Loft: 119.31 sqft*

Measurements are produced in accordance with NCREC Residential Square Footage Guidelines using laser measuring tools and LiDAR devices; deemed reliable but not guaranteed. Not intended for construction. Building and septic permits are not checked for the purposes of this report. Listing agent should review the completed work to verify that the HLA calculation includes only areas that qualify as HLA.